

# D-Box

packaged  
laser marking system



- small footprint
- choice of laser - EF Technology or Yb:Fibre
- marks wide range of materials – plastics, metals etc.
- exceptional reliability
- air cooled
- single phase power
- user friendly Windows™ software for optimum marking performance



# D-Box

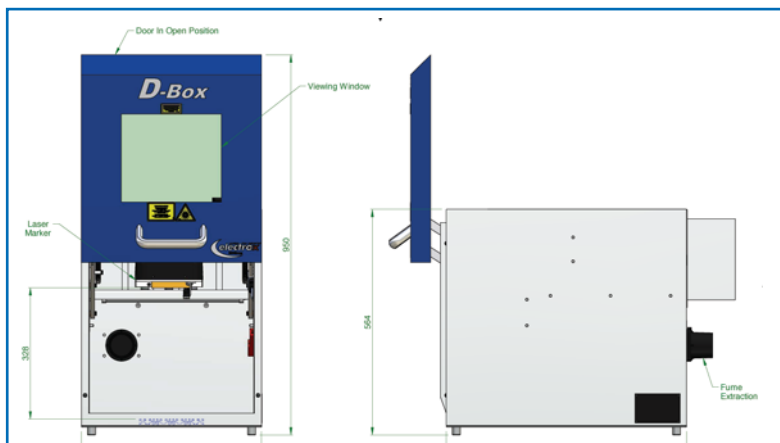
## packaged laser marking system

### marking area parameters

flat field lens focal length	maximum square marking field	maximum marking diameter	working distance
163 mm	100 mm	140 mm	184 mm

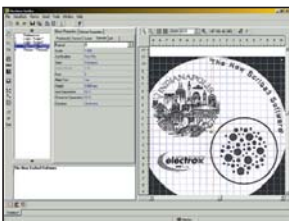
### dimensions

	Height (ins) (mm)	Length (ins) (mm)	Width (ins) (mm)	Weight (lbs) (kg)
Laser Enclosure	22 564	18 450	28 707	110 50
Control Unit	5 133	19 483	24 598	37 17



### software

Electrox laser marking software has been developed in conjunction with the D-Box to ensure optimum marking performance.



- Fast file transfer to the laser
- File import formats: PLT (HPGL), AI, DXF, PNL (Electrox), BMP, TIFF
- Bar Codes
- Two Dimensional Codes including Data Matrix
- Automatic Serialisation
- File Input Programming (Mail Merge)
- Date Coding
- Fill Editor
- Motion Control (4 Axis)
- Multiple I/O Interface

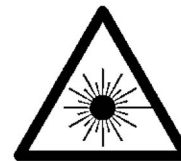
Electrox Razor, Scorpion, Raptor, Scorpion Rapide, E-Box, MaxBox, EF Technology, Scriba and Cobra are registered trademarks of 600 UK Limited. Electrox has a policy of continuous product development and improvement and reserves the right to modify designs and specifications without notice.

### laser specification

- Laser type** – EF Technology or Yb:Fibre
- Wavelength** – 1064nm (EF Technology Lasers)  
1060 -1080nm (Yb:Fibre Lasers)
- Pulse frequency** – CW, 0.1 - 500kHz (EF Technology Lasers)  
20 - 80 kHz **or**  
CW, 0.1 - 500kHz (Yb:Fibre Lasers)
- Max marking speed** – 10,000mm.s<sup>-1</sup>
- Operating temperature** – 15°C - 40°C non condensing
- Construction** – Welded Steel with lift up door
- Laser safe viewing window**
- Fume extraction port**
- Max pulse energy** – up to 0.4mJ (EF Technology Lasers)  
up to 1mJ (Yb:Fibre Lasers)
- Max peak power** – up to 25kW (EF Technology Lasers)  
up to 15kW (Yb:Fibre Lasers)
- Control electronics** – 19 inch rack mounted (3U) module

### utilities

- input voltage** – single phase + Earth, 50 or 60 Hz;  
100 - 240 V
- power requirement** – 0.6 kVA



**UK Office**  
Avenue One, The Business Park,  
Letchworth Garden City, Hertfordshire, SG6 2HB, UK.  
Tel: +44 (0)1462 472400 Fax: +44 (0)1462 472444  
e-mail: sales.uk@electrox.com

**USA Office**  
5601 Fortune Circle, South Drive, Suite A,  
Indianapolis, IN 46241, USA.  
Tel: +1 317 248 2632 Fax: +1 317 240 5787  
e-mail: sales.us@electrox.com

**Asia Pacific Office**  
Level 27, Prudential Tower, 30 Cecil Street  
Singapore 049712  
Tel: (65) 6725 6223 Fax: (65) 6725 6224